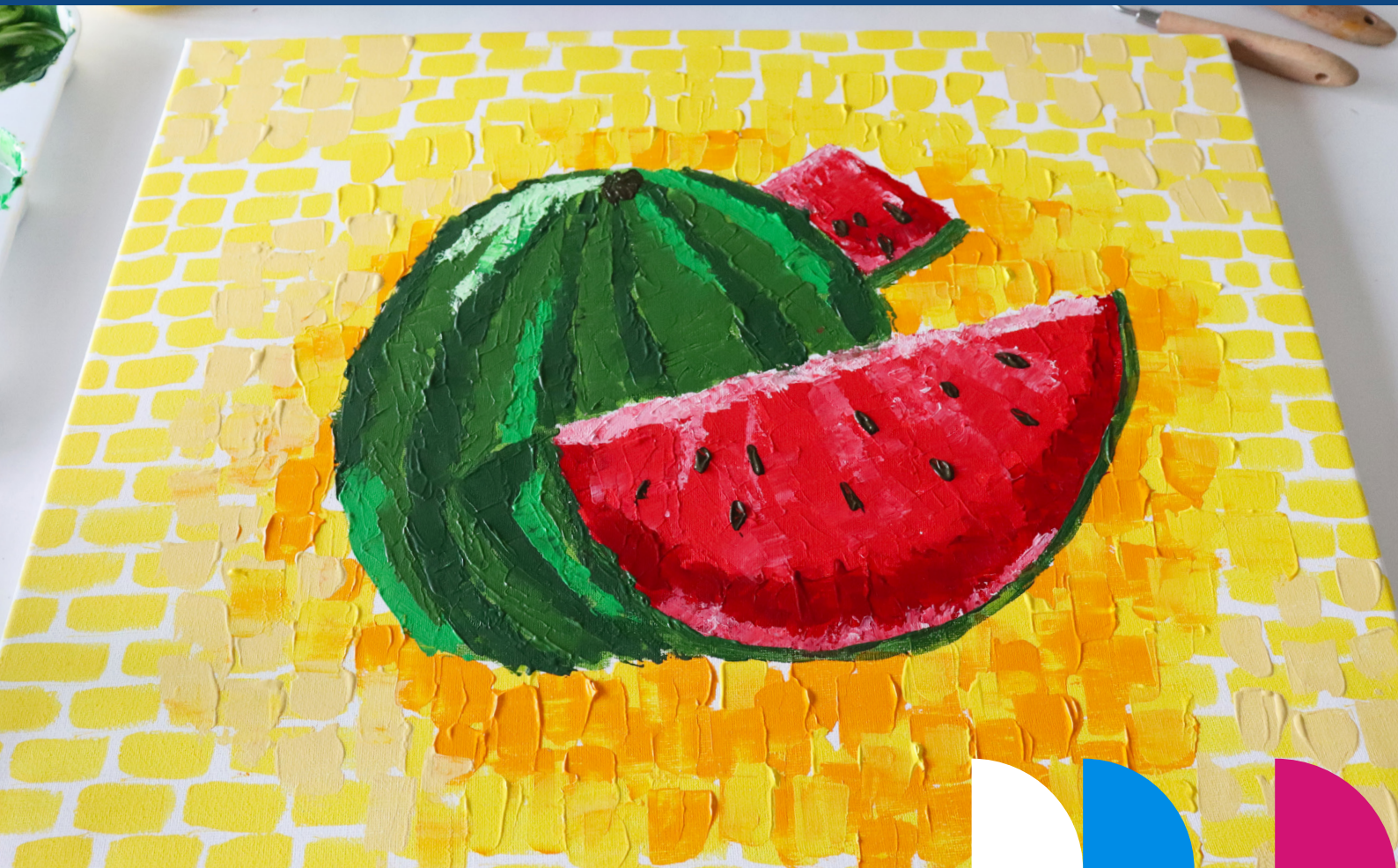


How To X6 Premium Acryl Fauvism Inspired



Get Started What You'll Need



PD350A...
X6 Premium
Acryl



PD146
Chroma Chromacryl
Impasto Gel Medium



DP293
Spectrum Graphites



PA212A
Artist's Palette
Knives



PB209...
Student Stretched
Canvas



BR930A...
Student Flat Synthetic
Brushes

BR401A...
Artist Round Synthetic
Long Handled Brushes



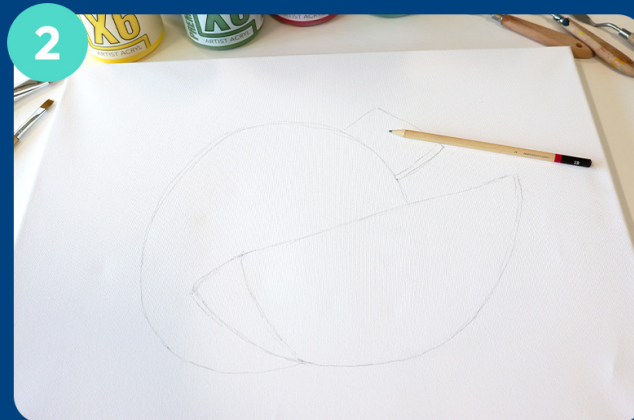
PB209...
Student Stretched
Canvas

Step by Step

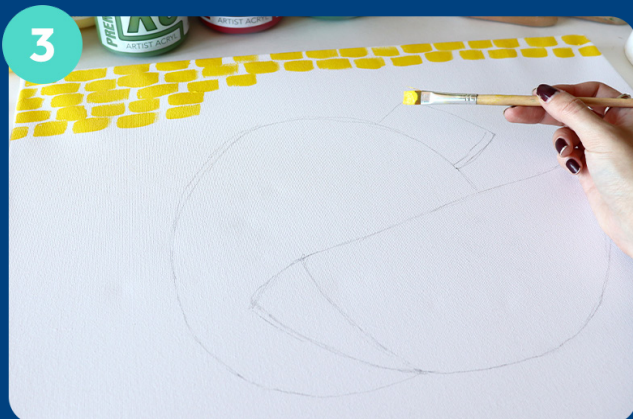
LET'S CREATE



1 Prepare your workspace, this could get messy! You will need a mixture of brushes and palette knives, as well as shades of X6 Premium Artist Acryl Paints.



2 Next, Draw or trace out your design using a graphite pencil with loose pressure. You don't want your marks to show through your paint!



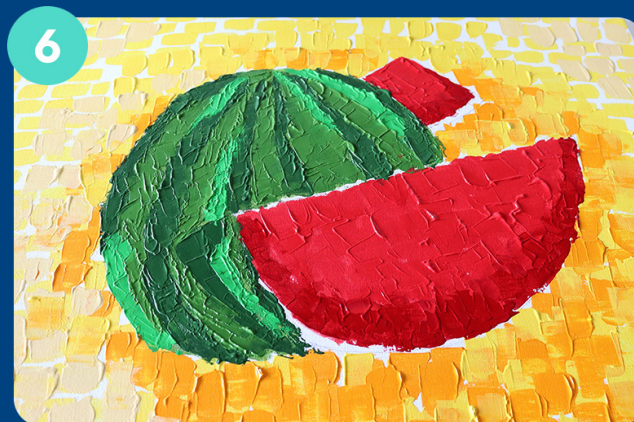
3 Using a flat brush, start by brushing out dash marks on your background, varying in length using one colour. You can leave gaps of white around the edges of your design.



4 Grab a palette knife and start to build up your background with short landscape strokes. Here you can use a variety of shades to add depth and shadow to your middle ground. Here we used tones of yellow and orange.



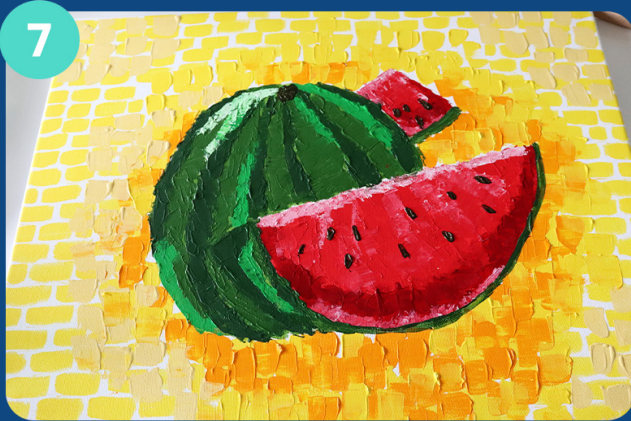
5 Next, using a round brush, apply a thin layer of paint to your design. This only needs to be rough as we will be building up layers on top. Allow to dry.



6 Using a palette knife again, build up your colours using darker and lighter shades of colour. You can make X6 thicker by adding Chromacryl Impasto Gel Medium to give more texture to your design. Caution: This is an extremely strong adhesive, use under supervision.

Step by Step

LET'S CREATE



Allow the previous layer to dry. You can now add more detailing to your piece such as highlights and small details using a palette knife or thin brush. Here, we added the watermelon seeds and highlights last!